

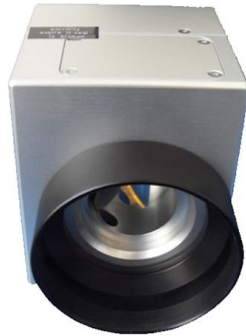


Riselaser

深圳市华升激光科技有限公司

SHENZHEN RISELASER TECHNOLOGY CO., LTD

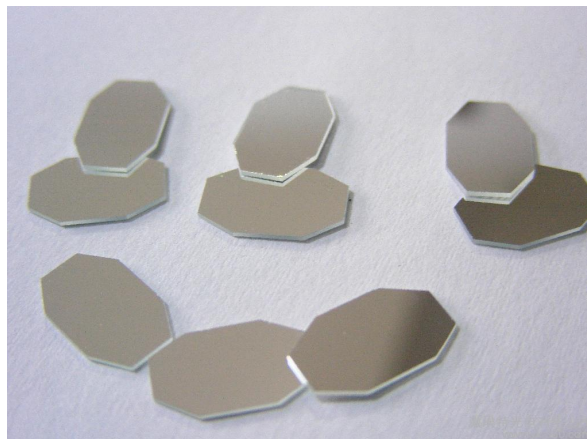
10mm Galvo Scan Head(Laser Part)



Product details

A Galvo Scan Head (or called laser marking head, laser scanner) consists of two scan mirrors, two galvanometers (or called galvo-scanner motor) & drive cards, an X-Y mount, a scanning lens, an interface card (or called D/A card), a set of marking software and a DC power supply.

Two types of scanning optics for CO₂ and Fiber or Nd:YAG lasers are available.



1. The most cost-effective high speed scan galvo laser.
2. The input aperture of scan galvo laser is 10 mm.
3. Scan galvo laser has a superior performance of zero drift, higher speed, smaller size, and stronger anti-interference.

E-mail: carina@riselaser.com

Website: www.riselaser.com www.shdlaser.com

Address: Building 5, COFCO (Fuan) Robot Intelligent Manufacturing Industrial Park, No. 90 Dayang Road, Fuhai Street, Bao'an District, Shenzhen, China, 518103



深圳市华升激光科技有限公司

SHENZHEN RISELASER TECHNOLOGY CO., LTD

Riselaser

Technical Parameters

| | |
|--------------------------|---|
| Aperture | 10mm |
| Typical Scan Angle | $\pm 0.35\text{rad}$ |
| Nonlinearity | 3.5mrad |
| Tracking error | 0.16ms |
| Repeatability | $< 20\text{urad}$ |
| Gain drift | $< 50\text{ppm/K}$ |
| Zero drift | $< 15\text{urad/K}$ |
| Long-term drift over 8 h | $< 30\text{mrad}$ |
| Marking speed | 2m/s |
| Positioning speed | 10m/s |
| Power Requirements | $\pm 15\text{VDC}$, max.3A each |
| Analog | $\pm 5\text{V}$ |
| Reflection wavelength | 1060/1064/532/355nm |
| Operating temperature | $25^{\circ}\text{C} \pm 10^{\circ}\text{C}$ |

Driver Board Specification of scan galvo laser

| | |
|-------------------------------------|----------------------------|
| Input Voltage | $\pm 15\text{VDC}$ |
| Interface Signals Digital | XY2-100 |
| Position Signal Input Resistance | $1\text{K} \pm 1\% \Omega$ |
| Position Signal Input Scale Factor | $0.5\text{V}/^{\circ}$ |
| Position Signal Output Scale Factor | $0.5\text{V}/^{\circ}$ |
| Working Temperature | $0-45^{\circ}\text{Motor}$ |
| Packafe Diameter(CM) | $28*28*20$ |

E-mail: carina@riselaser.com

Website: www.riselaser.com www.shdlaser.com

Address: Building 5, COFCO (Fuan) Robot Intelligent Manufacturing Industrial Park, No. 90 Dayang Road, Fuhai Street, Bao'an District, Shenzhen, China, 518103



Riselasers

深圳市华升激光科技有限公司

SHENZHEN RISELASER TECHNOLOGY CO., LTD

Lens cleaning

1. For light pollution (dust, fiber particles) were flexible cleaning.

Using a blowing balloon, Blow off scattered contaminants on the surface of the optical element.



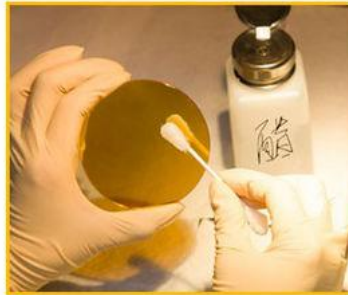
2. For light pollution (stains, fingerprints) were flexible cleaning.

Propanol, acetone glue with a cotton swab or alcohol to gently wipe the surface.



3. For moderately polluted (saliva, oil) in moderate-intensity cleaning.

Infiltrating distilled white vinegar with a cotton swab, wipe the surface a little pressure.



E-mail: carina@riselasers.com

Website: www.riselasers.com www.shdlasers.com

Address: Building 5, COFCO (Fuan) Robot Intelligent Manufacturing Industrial Park, No. 90 Dayang Road, Fuhai Street, Bao'an District, Shenzhen, China, 518103